

OPERATION MANUAL

BATTERY-POWERED

ELECTRIC SCOOTER



MODEL:7366 / 7377

www.crooza.de

The vehicle must be operated only under adult supervision!

WARNING: Never leave charging unattended!

Read this manual carefully before the operation.

Technical Data

| | |
|-------------------------|--|
| Item no | 7366 / 7377 |
| Age properly | 36-96 months old |
| Vehicle Size | 101 x 49 x 73 cm |
| Net weight | 7.78 kg |
| Load capacity | 25 kg |
| Environment temperature | 0-40 °C |
| Speed | approx. 3.5-4 km/h |
| Battery | 6V4,5Ah |
| Charger | Input: AC220V~240V/50Hz~60Hz |
| Charging lifetime | approx. 300 |
| Charging time | 8-15 Hours, never more than 16 hours once. |

SAFE DRIVING



WARNING

PREVENTING INJURIES

- The vehicle must be operated only under adult supervision!
- Never use the vehicle in darkness!
- Operation only on safe grounds!

E.g: In areas

- **Without** swimming pools or ponds. Risk of drowning!
- **Without** slopes.
- **Far** from stairs, ramps, slopes, streets and boulevards.

- Operating Directives

Ensure that the following rules are followed for a safe operation:

- Always sitting properly on the seat, getting on and off only when the vehicle is off.
- No driving without shoes.
- Only one (1) child must drive the vehicle.

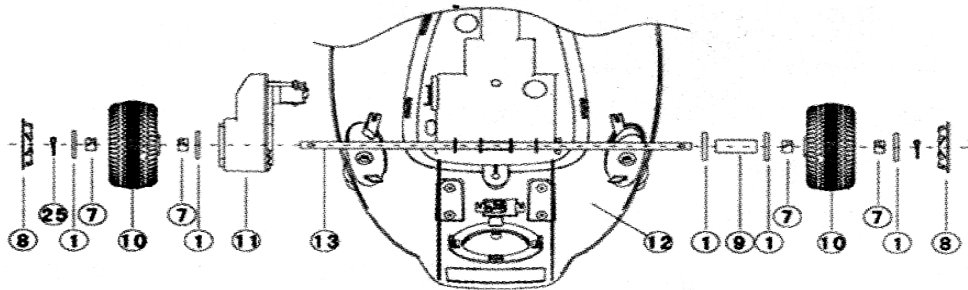
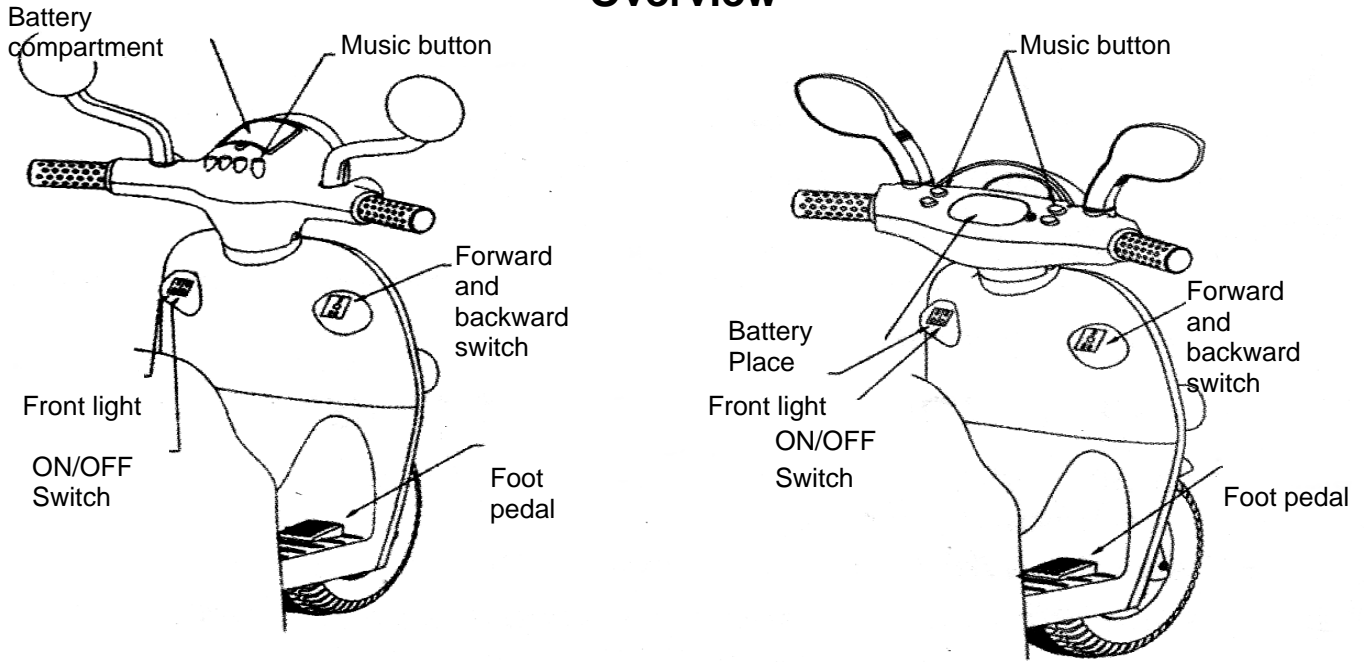
- **OPERATION IS AT USER'S RISK. PARENTS ARE RESPONSIBLE FOR THEIR CHILDREN.**



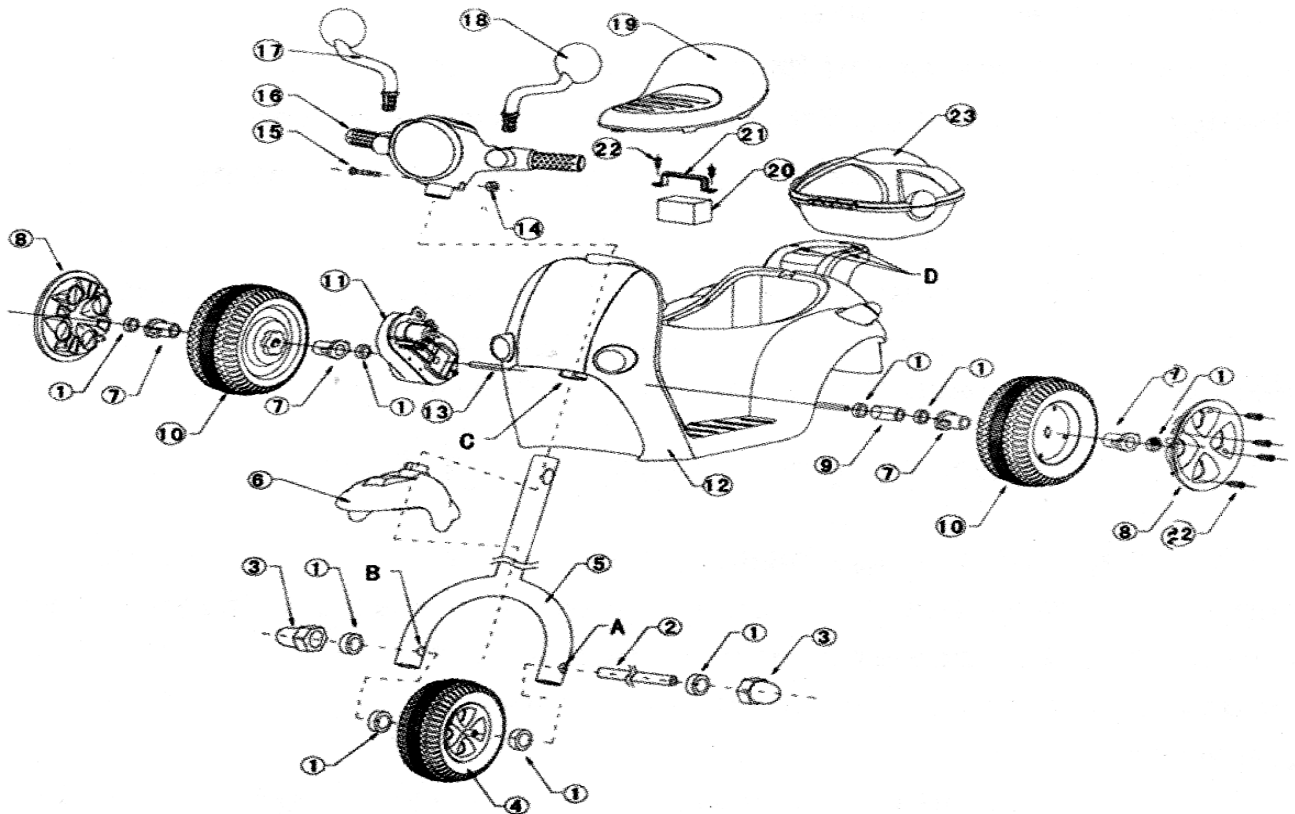
NOTICE

- Small items are included in the package at delivery status. Assembling must be conducted only by adults.
- The charger must be used only in a dry environment.

Overview



2



For a more detailed operation manual, visit www.crooza.de



Model 7366



Model 7377

ELECTRIC SHOCK



WARNING

- Unfixed batteries may fall off the overturned vehicle and cause injuries. Ensure that the batteries have been fixed carefully.
- FIRE PREVENTION
 - The electric system of the vehicle is not allowed to be altered. Alterations may lead to fire, black-out of the electric systems and serious injuries.
 - Using wrong batteries and chargers may lead to fire, explosion and serious injuries.
 - Only adults are allowed to handle batteries. The batteries, which are quite heavy, are filled with electrolyte. Leaking batteries may lead to serious injuries.
 - Do not let your children to charge the batteries. Only adults are allowed to charge the batteries. Children may get injured by an electric shock.
 - Before charging the batteries, read the safety instructions about batteries.
 - Please check the batteries, cable connections and the connector of the charger before charging the batteries. If you find any defects, do not charge them until they are repaired by an expert.
 - The motors produce HEAT! Be careful during the contact with the motors.



WARNING

The charger must be used only in a dry environment.

- The battery has a thermal fuse. The thermal fuse moves back on its own and disrupts the operation when there is an overload or an adverse condition. If the fuse blows out, take the foot from pedal and wait for approx. 25 seconds before the vehicle is operated again. In order to avoid repeating operational disruptions, ensure that the vehicle doesn't carry more than 25 kg. Avoid unfavorable conditions such as slopes or solid objects. Otherwise, the wheels may stand still and the motors may get overcharged. Teach your child to keep the vehicle still before changing the direction.
- If the fuse doesn't comply with the normal operational conditions, contact your service.
- Before the first operation, the batteries must be charged 8-15 hours once.
- While being charged, the batteries must stand vertical.
- The charger is not a toy.
- The batteries mustn't be short-circuited.
- The batteries don't have to be taken out of the vehicle for charging.
- Charging through contaminated socket can lead to short-circuit and other defects. Therefore, it must be refrained.
- The charging process must be carried out safely, FAR from easily inflammable materials. Look out excessive smoke and heat generation.
- The charging process must be conducted continuously under adult supervision!

Instructions for a safe operation

DANGER !



WARNING

PREVENTING INJURIES

- The vehicle must be operated only under adult supervision!
- Never use the vehicle in darkness!
- Operation only on safe grounds! E.g:
In areas
 - without swimming pools or ponds. Risk of drowning!
 - without slopes.
 - far from stairs, ramps, slopes, streets and boulevards.
- Operating Directives
 - For a safe operation, ensure that these rules are learnt and followed by the children.
 - Always sitting properly on the seat.
 - No driving without shoes.
 - Before getting on and off, the vehicle must be stopped completely.
 - Only one (1) child must drive the vehicle.

Explain the instructions below to your child

Right after seeing the vehicle, your child will want to drive it immediately. Children are not capable of judging, realizing and assessing dangers. Unsupervised operations can lead to serious injuries.

Before letting your child drive the vehicle, you must check the area and your child's ability to judge and drive the vehicle safely. Even if children are instructed before, they are not capable of foreseeing the dangers and turning away from them. There are no other directly supervision options for adults. Set up safety rules adapted to local conditions alongside the instructions below about using the vehicle. Ensure that these instructions are followed. All of these rules must be obeyed by the children who will play with your child as well.

Directives for a safe operation:

Ensure that children learn and obey the rules below:

1. Always sitting properly on the seat. No driving by standing.
2. No driving without sturdy shoes.
3. Only one (1) child must drive the vehicle. If children sit improperly or stand in the vehicle, they may fall off; the vehicle may overturn and this may lead to serious injuries.
4. Do not allow your child to drive the vehicle in the streets or roads where motored vehicles are driven.
5. Do not allow your child to drive the vehicle near swimming pools, ponds, barriers (e.g: furniture, trees with low branches etc.) or overhanging building parts (e.g: stairs, wall projections etc.).
6. Never use the vehicle in darkness!
 - An unexpected barrier may cause an accident.
 - Driving only in daylight or well-lit areas.
7. Forbid your child to drive on uneven grounds.
8. Do not allow your child to drive down the stairs.
 - Even if the pedal isn't stepped, it may reach a high and dangerous speed.
 - The vehicle may overturn.
 - The motor may stop suddenly and the vehicle may roll down the stairs together with the child.
9. Moving things must be kept away.
Revolving things like motor, gearbox and wheels can jam the fingers, hair etc. and lead to serious injuries. Do not allow your child to operate the vehicle in lateral or over-head position.
10. Do not use any easily inflammable materials near the vehicle.
The vehicle has electric switches which spark (like all the switches) when triggered. Easily inflammable liquids can catch fire.
11. Take the batteries off to prevent an unsupervised operation.

OPERATION INSTRUCTIONS

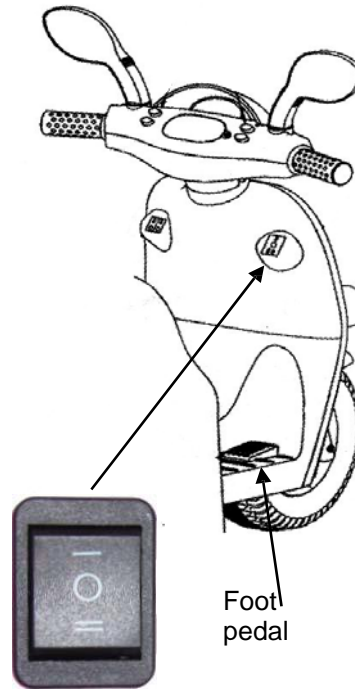
Press I-O-II on the right side of the vehicle.

- If the pedal is stepped when I is switched, the vehicle will move forward.
- If O is switched, the vehicle will not move (OFF).
- If the pedal is stepped when II is switched, the vehicle will move backward.

Practise on steering with your child and show him/her by which speed the steering wheel must/can be turned.

IMPORTANT!

For the safety of your child and to avoid injuries led by the gearbox of the vehicle, teach your child not to change direction while driving.



ATTENTION!

The vehicle must be operated **ONLY** in empty places.

A big part of floor coverings, which have been misplaced, can be damaged by the vehicle.

The manufacturer and the importer are not responsible for the damages occurring on floor coverings or other building parts.



- The vehicle has a break system, by means of which the vehicle stops automatically as soon as the foot pedal is disengaged.
- Ensure that your child knows how to steer and to stop the vehicle.

Maintenance Instructions

Check if all the screws, nuts and caps are set correctly and firmly. Ensure that none of the plastic parts are damaged and broken.

In snowy or rainy weather, keep the vehicle in a dry room which has a ceiling. **Even if the vehicle won't be used, charge the batteries at least once a month.**

If the vehicle is so dirty, it can be cleaned with a water hose. Avoid any contact of water with the electric system, battery and the switches of the vehicle.

Contact of water with motor and electric components can lead to corrosion and damage on the motor and the electric components.

Do not use the vehicle on the sand. Sand in the motor, gearbox or electric components causes blockades and blackouts of the related parts.

The vehicle can be cleaned with a dry cloth. In order to restore the original gleam of the vehicle, you can work on the plastic parts of the vehicle with a wax free furniture polish. **NEVER** use a car polish.

For a safe operation, it is recommended that the vehicle is checked regularly by an authorized service point.

Problems/Troubleshooting

| Problem | Possible Cause | Solution |
|--------------------------------------|------------------------------------|---|
| Motor doesn't work | The battery wasn't charged. | <p>Before the first operation, the batteries must be charged for at least 8 hours once. After every operation, batteries must be charged at least 8-15 hours once. Do not charge the batteries longer than 16 hours once.</p> <p>Check all the cable connections. Ensure that charger jack is connected both to the vehicle and the socket. Check if the wall socket is under power.</p> |
| | The charger doesn't work. | Whether a charger functions correctly can only be understood with the help of a voltmeter. If you are not sure about whether your charger functions correctly, contact your Service Center. |
| | The fuse blew out. | The fuse burns out when the vehicle is overcharged or used under adverse conditions. If a fuse burns out, it must be replaced. In order to avoid repeating operational disruptions, ensure that the vehicle doesn't carry more than 25 kg or doesn't drag anything with it. Avoid unfavorable conditions such as slopes or solid objects. Otherwise, the wheels may stand still and the motors may get overcharged. |
| | Loose cables and connections. | Check all the cable connections. Ensure that the connector of the motor is attached to the battery and all the cables are connected properly. |
| | Defected battery | If the battery is old or the instructions about the batteries weren't applied, it can be defected. Contact the Service Center. |
| | Defected switch | The electric switch can be corroded due to the contact with water or mud or blocked with dust and sand. |
| | Defects on motor | Contact your Service Center for diagnosis and reparation. |
| Sudden stopping during the operation | Loose cabling or cable connections | Check all the cable connections. Ensure that the connector of the motor is attached to the battery and all the cables are connected properly. |
| | Burn-out of the fuse | <p>The fuse burns out when the vehicle is overcharged or used under adverse conditions. If a fuse burns out, it must be replaced.</p> <p>Suitable replacement parts can be found at www.crooza.de</p> |

| Problem | Possible Cause | Solution |
|-------------------------|--|---|
| Short operation time | The battery wasn't charged. | <p>Before the first operation, the batteries must be charged for at least 8 hours once. After every operation, batteries must be charged for 8-15 hours once. Do not charge the batteries longer than 16 hours once.</p> <p>Check all the cable connections. Ensure that charger jack is connected both to the vehicle and the socket. Check if the wall socket is under power.</p> |
| | Overcharged battery | Never charge the batteries longer than 16 hours once. If you think that batteries are damaged due to overcharging, contact your Service Center. |
| | The batteries are old and are not charged fully. | <p>Even when the batteries are used properly, they have a limited lifetime. Depending on the operation period and conditions, its lifetime can change between approx. 1-3 years (approx. 300 times) In such a case, replace the batteries with the same model. Do not try to change only some parts of the batteries.</p> <p>Replacement parts can be ordered on crooza.de</p> |
| | Burn-out of the fuse | <p>The fuse burns out when the vehicle is overcharged or used under adverse conditions. If a fuse burns out, it must be replaced. In order to avoid repeating operational disruptions, ensure that the vehicle doesn't carry more than 25 kg or doesn't drag anything with it. Avoid unfavorable conditions such as slopes or solid objects. Otherwise, the wheels may stand still and the motors may get overcharged.</p> <p>Appropriate replacement parts can be found at www.crooza.de</p> |
| The vehicle is inactive | The battery wasn't charged. | <p>Before the first operation, the batteries must be charged for at least 8-15 hours once. After every operation, batteries must be charged at least 8-15 hours once. Never charge the batteries longer than 16 hours once.</p> <p>Check all the cable connections. Ensure that charger jack is connected both to the vehicle and the socket. Check if the wall socket is under power.</p> |
| | The battery must be recharged. | After every operation, the batteries must be charged for at least 8-15 hours once. |
| | The vehicle is overloaded | In order to avoid repeated operational disruptions, ensure that the vehicle is not loaded with more than 25 kg or doesn't drag anything with it. |
| | Unfavorable operational conditions | Avoid unfavorable conditions such as slopes or solid objects. Operate the vehicle generally on flat and firm grounds. |

| Problem | Possible Cause | Solution |
|---|--|--|
| The vehicle sometimes works, sometimes doesn't | Loose cable connections | Check the cable connections and ensure that everything is firm. |
| | Defected motor or switch | Contact your Service Center for diagnosis and reparation. |
| When pedal is stepped, the vehicle doesn't move without push-starting. | Loose cable connections | Check the cable connections and ensure that everything is firm. |
| | 'Dead Point' on the electromotor | Contact your Service Center for diagnosis and reparation. |
| The fuse burnt out although the vehicle wasn't overcharged and operated under adverse conditions. | Defected battery or charger | Change the batteries and the charger. Replacement parts can be found on crooza.de |
| | There has been a direction change without stopping the vehicle. | Teach your child to change the direction after stopping the vehicle. |
| Loud ticktack or rubbing sound from the gearbox | Broken gear-wheel in the gearbox | Change the defected gearbox. Replacement parts can be found on crooza.de |
| The charger gets warm. | This is normal; some chargers get warm during charging. | Nothing must be done. |
| | | If your charger doesn't get warm during charging, it doesn't mean that there is a problem. |
| The battery produces blubber sound while being charged. | This is normal; some chargers produce this kind of sounds during charging. | Nothing must be done. |
| | | If your batteries produce no sounds during charging, it doesn't mean that there is a problem. |

Instructions Related to the Maintenance and Disposal of the Vehicle

MAINTENANCE

- If a battery is leaky, remove the battery which has acid escaping by avoiding skin contact and put the battery in a plastic bag.
- Please check the description on the right side to learn how the battery can be disposed in the right way.
- In the event of skin or eye contact, rinse the affected part in running water for at least 15 minutes and see a doctor.
- When acid is swallowed, water, milk etc. must be drunk or egg white eaten immediately. Never try to throw up. Call the doctor instantly.
- Before the first operation, the batteries must be charged with the help of the provided charger for at least 8-15 hours once. Never charge the batteries longer than 16 hours once. Overloading and excessive discharge shorten the battery life and operating period substantially.
- Before every operation, the batteries must be charged at least 14 hours. Charge the batteries after every operation, no matter how long the vehicle was operated.
- The batteries must stand vertical while being charged.
- Do not discharge the batteries completely before charging them again.
- Charge the batteries for a long time before putting the vehicle away.
- Even if the vehicle won't be used, charge the batteries at least once a month.
- Batteries left empty will definitely stop working later.
- Never leave leaking batteries in the vehicle.
Leaking liquid can damage the vehicle.
- Do not keep the batteries on the surfaces like the countertops in kitchens; they may get damaged.
Take precautions to protect the contact surface before you put the batteries down.
- Do not keep the batteries in a place where the temperature is above 24 °C and below -23°C.
- Only use 12V batteries.
- Do not forget to charge the batteries for at least 8-15 hours before the first operation.
- Ensure that the batteries are not loose in the vehicle. Always use a battery fastener to lock the batteries.
- Check the batteries and the charger against imperfections and defects before every charging.
If you detect a defect, do not charge the batteries until the defected part is repaired.

DISPOSAL

- The provided battery is overflow-protected and welded. It must be ecologically disposed and recycled.
- Do not throw the battery into fire. It may leak or explode.
- Do not dispose the batteries together with normal domestic waste. **Disposing the batteries with normal domestic waste is prohibited by law!**
- Protect the environment by not disposing the batteries with normal domestic waste (2202/96/EC). Get information about recycling and disposing options from the local administration in your vicinity.



Pb Cd Hg

**Batteries separately disposed
(not with domestic waste)
Do not throw the battery into fire!
Don't open!**

- The symbol „crossed-out waste container“ on the product and in the manual indicates that electric and electronic devices must be collected and disposed separately from normal domestic waste.
- There are various collection systems about recovery and recycling available in the EU.
- For more information, please consult your local authorities or your dealer.

Please read the manual carefully and retain it for future reference.

IMPORTANT!

1. All the illustrations serve the visualization and specification of the product. If you notice differences between the illustration and the product, follow the product construction.
2. Technical modifications in whole or in part to increase the product quality are expressively reserved without prior notice.

dubax-marketingoHG

WEEE-Reg.-Nr.: DE 33541416

Germany

info@dubax-marketing.de

Model:7366 / 7377

www.crooza.de

All rights reserved.

Copying, Performing and Distributing - **even in parts** - only with written consent of Dubax-Marketing oHG Darmstadt.